

Specification for Speaker	Page	2/9
	Revision No.	1.3
Model No. : KP1326SP1-6678	Drawing No.	KFC6678

## CONTENTS

1. Scope
2. General
3. Electrical and Acoustic Characteristics.
4. Reliability Test
5. Measurement Block Diagram & Response curve
6. Structure
7. Dimensions
8. Packing
9. Revision

# Specification for Speaker

Page

3/9

Model No. : KP1326SP1-6678

Revision No.

1.3

Drawing No.

KFC6678

## 1. Scope

This specification is applied to the dynamic speaker which is used all of the electrical acoustic product.

-- compact, rich sound

-- applications: mobile phone, PDA, notebook computer, etc. ...

## 2. General

2.1 Out-Diameter : 13 mm

2.2 Height : 2.65 mm

2.3 Weight : 0.8 g

2.4 Operating Temperature range:

-20~+70°C without loss of function

2.5 Store Temperature range:

-30~+85°C without loss of function

## 3. Electrical and Acoustic Characteristics.

Test condition : 15 ~ 35 °C, 25% ~ 85% RH, 860~1060 mbar

No	Items	Specification
1	Impedance	8 Ω ± 15% (1Vrms at 2.0KHz)
2	Sound Pressure Level	90 dB ± 3dB (0.3w/0.1m at average1.0,1.2,1.5,2.0kHz)
		86 dB ± 3dB (0.1w/0.1m at average1.0,1.2,1.5,2.0kHz)
3	Resonance Frequency	1100 Hz ± 20%
4	Frequency Range	Fo ~20KHz Output S.P.L.±10%
5	Input Power	Rated 0.5 W / Max. 0.7 W
6	Distortion	<10% Max. at 1.5kHz/0.3w
7	Buzz and Rattle	Should not be audible buzzes,rattles when the 2V sine wave signal swept at frequency range.
8	Polarity	When supplied plus D.C. voltage to (+) terminal, the cone diaphragm must move to forward.

# Specification for Speaker

Page

4/9

Revision No.

1.3

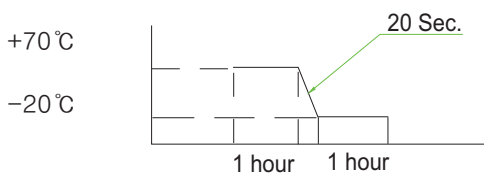
Model No. : KP1326SP1-6678

Drawing No.

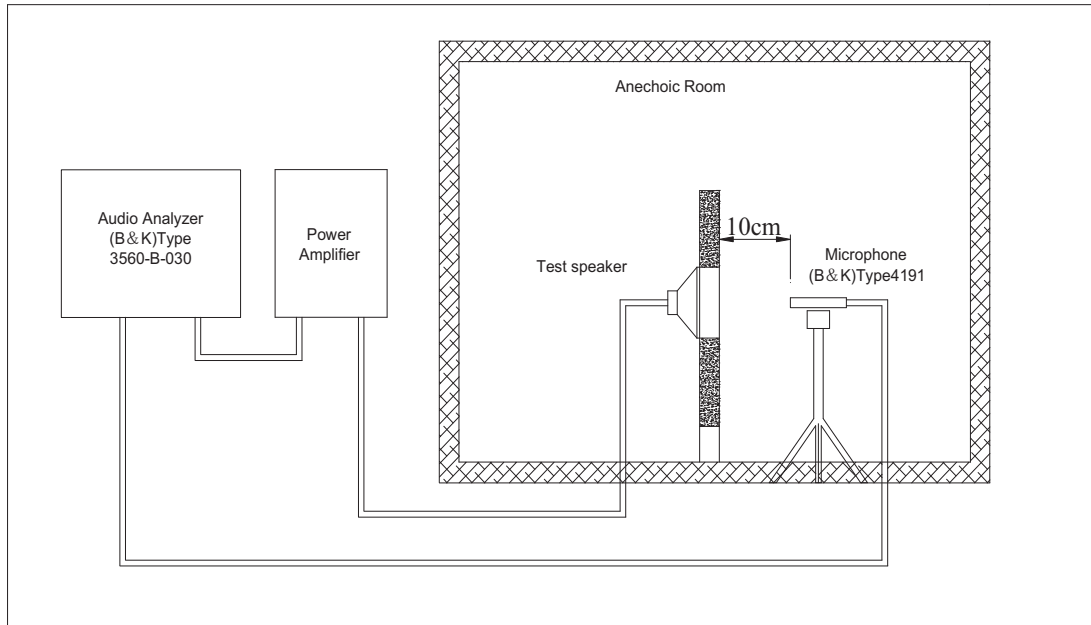
KFC6678

## 4. Reliability Test

After test(1~7item), the speaker S.P.L . difference shall be within  $\pm 3\text{dB}$ , and the appearance not exist any change to be harmful to normal operation (e.g. cracks,rusts,damages and especially distortion).

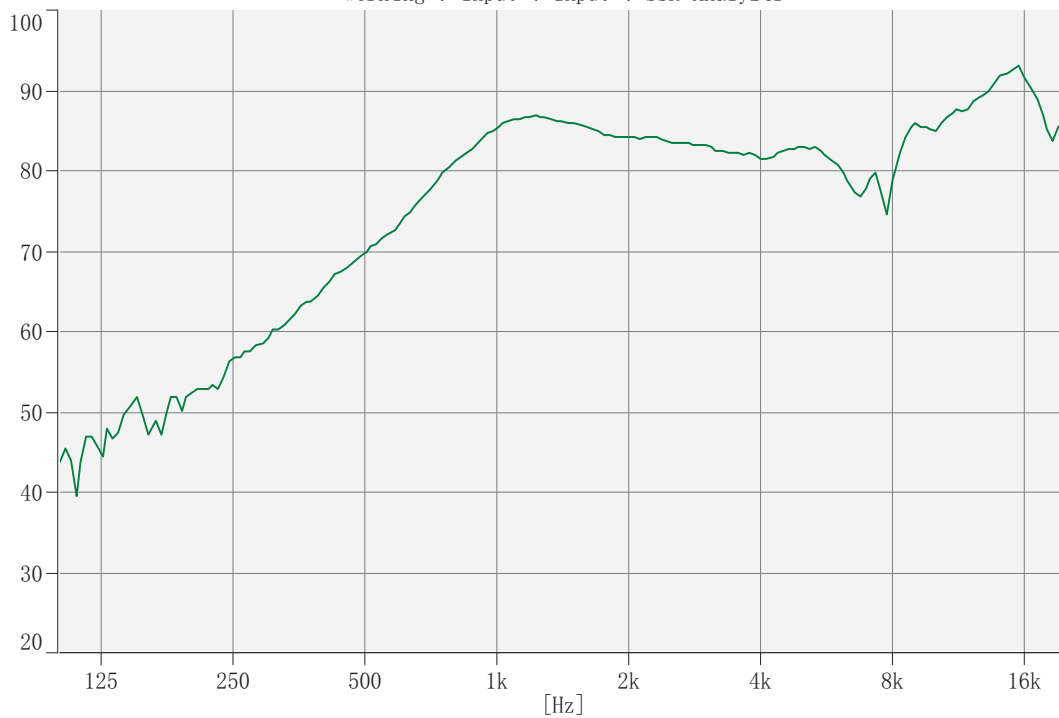
No	Items	Specification
1	High Temperature Test	After being placed in a chamber with $+85\pm 3\text{ }^{\circ}\text{C}$ for 96 hours and then being placed in natural condition for 1 hour, speaker shall be measured.
2	Low Temperature Test	After being placed in a chamber with $-30\pm 3\text{ }^{\circ}\text{C}$ for 96 hours and then being placed in natural condition for 1 hour, speaker shall be measured.
3	Humidity Test	After being placed in a chamber with 85 to 90%R.H. at $+40\pm 2\text{ }^{\circ}\text{C}$ for hours and then being placed in natural condition for 1 hour, speaker shall be measured.
4	Thermal Shock Test	<p>After being placed in a chamber at <math>+70^{\circ}\text{C}</math> for 1 hour, then speaker shall be placed in a chamber at <math>-20^{\circ}\text{C}</math> for 1 hour(1 cycle is the below diagram). After 6 above cycles, speaker shall be measured after being placed in natural condition for 1 hour.</p>  <p style="text-align: center;"> <math>+70^{\circ}\text{C}</math>  <math>-20^{\circ}\text{C}</math> </p>
5	Vibration Test	After being applied vibration of amplitude of 1.5mm with 10 to 55Hz band of vibration frequency to each of 3 perpendicular directions for 1 hour, then placed in natural condition for 1 hour, speaker shall be measured.
6	Drop Test	The speaker when mounted in the jig which weight 85g~100g, shall with stand 15 times random drops from a height of 1.5 meter to a concrete floor faced with 5mm thick hard wood board.and be nothing mechanical damage.
7	Load test	After being applied loading white noise with input power 0.5W(2Vrms.) for 96 hours, then placed in natural condition for 1 hour, speaker shall be measured.
8	Insulation test	When they are measured with DC 100V the insulation resistance between v.c. terminal and frame must be more than 1 MΩ

### 5. Measurement Block Diagram & Response curve



[dB/20.0u Pa]

1326-2#+GASKET-0.1W-0.1M (Magnitude)  
Working : Input : Input : SSR Analyzer



# Specification for Speaker

Page

6/9

Revision No.

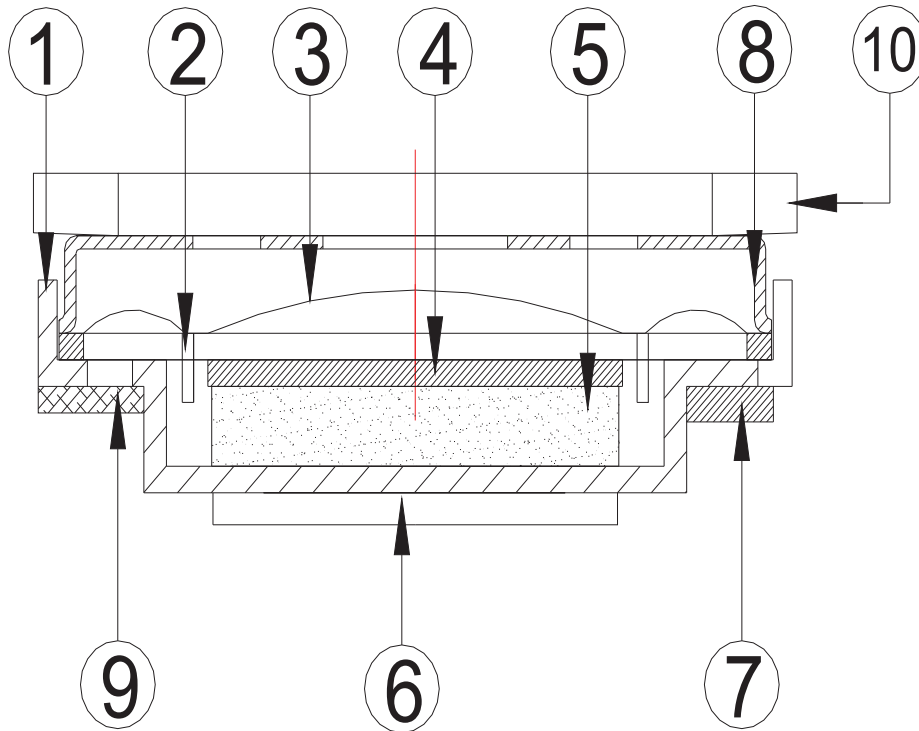
1.3

Model No. : KP1326SP1-6678

Drawing No.

KFC6678

## 6. Structure



10	gasket	1	bond+PORON+bond	
9	Screen	1	net180	
8	Protector	1	SUS304	
7	Terminal	1	PCB	
6	Tape	1	Bond+paper	
5	Magnet	1	Nd-Fe-B	
4	Plate	1	SPCC	
3	Diaphragm	1	PEN	
2	V-coil	1	copper	
1	Frame	1	SPCC	
No.	Part Name	Q'ty	Material	Remarks

# Specification for Speaker

Page

7/9

Revision No.

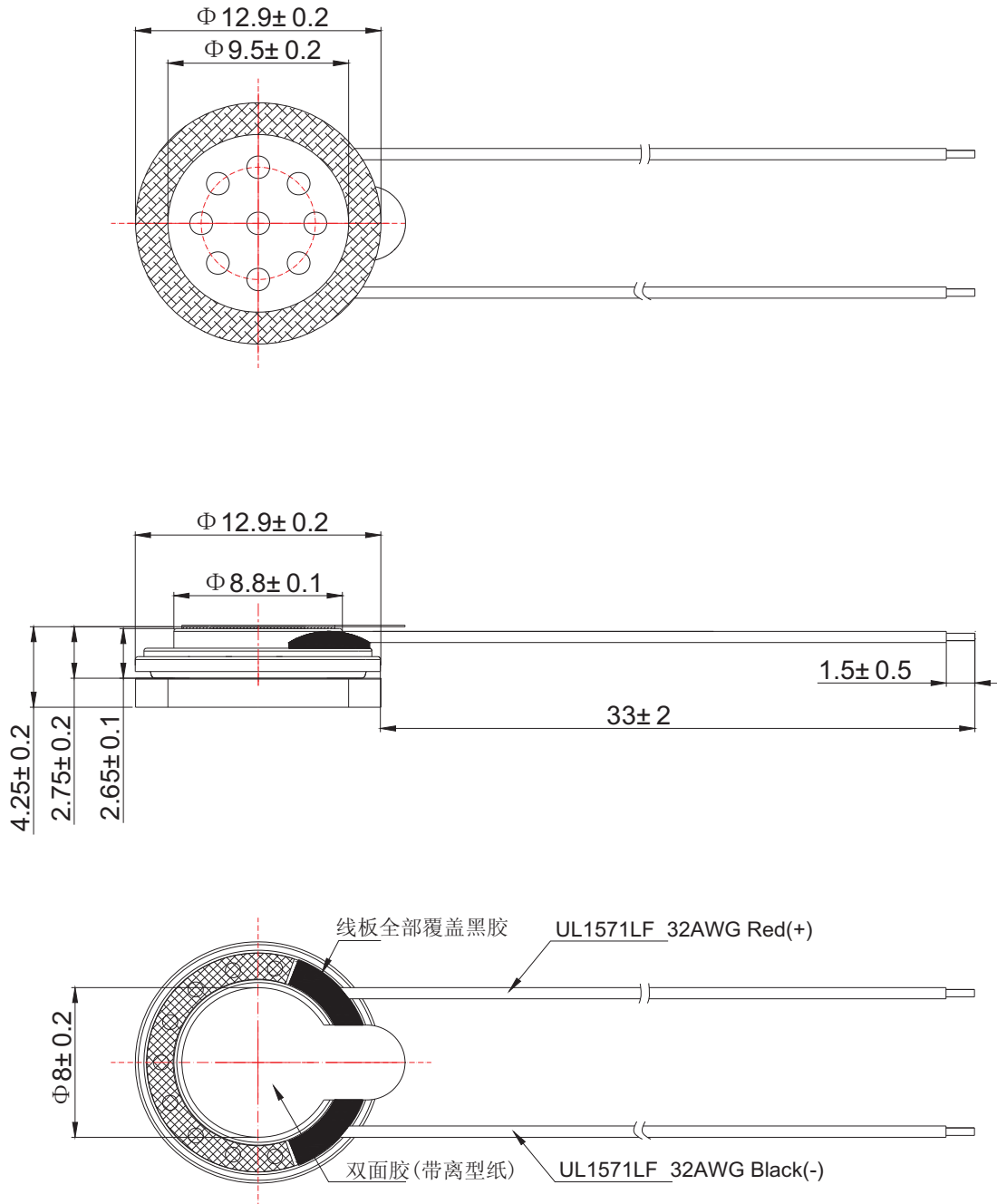
1.3

Model No. : KP1326SP1-6678

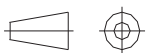
Drawing No.

KFC6678

## 7. Dimensions



FIRST ANGLE PROJECTION



UNIT : mm

Tolerance :  $\pm 0.2$

# Specification for Speaker

Page

8/9

Model No. : KP1326SP1-6678

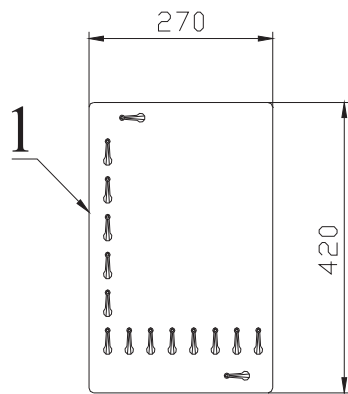
Revision No.

1.3

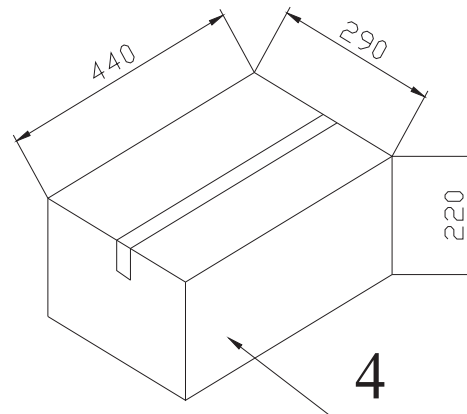
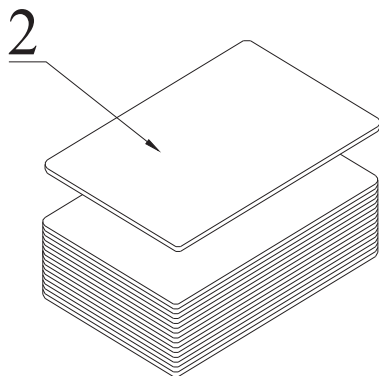
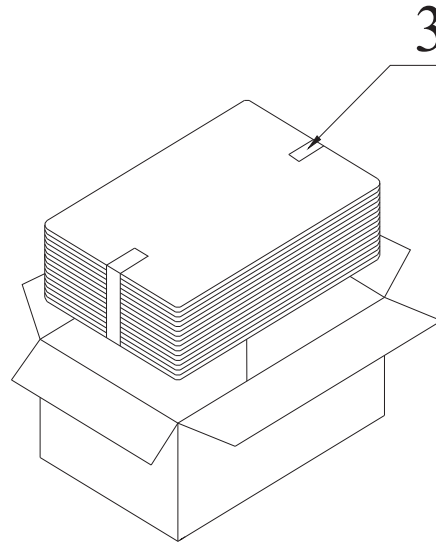
Drawing No.

KFC6678

## 8. Packing



100Pcs



QTY: 2000Pcs

440 x290 x220